

KEYPLAN

CONSULTING ENGINEER

ALIOSKAR GANEM P.E.  
 FL. LIC. No. 74745

3001 SW 45TH STREET,  
 DANIA BEACH, FL. 33312

NOTES/COMMENTS

REVISIONS / SUBMISSIONS

DRAWN BY: AG  
 CHECKED BY: AG  
 INITIAL DRAWING ISSUE DATE  
 RELEASE DATE:

MODEL A

A-1003



STOREFRONT SCHEDULE							
MARK	FROM ROOM NAME	WIDTH	HEIGHT	TYPE COMMENTS	REMARKS	SHGC	U-FACTOR
33		14' - 11"	9' - 0"	SLIDING GLASS DOOR	CAT II SAFETY GLASS	0.28	1.08
34	BEDROOM #1	8' - 0"	9' - 0"	SLIDING GLASS DOOR	CAT II SAFETY GLASS	0.28	1.08
35	BEDROOM #2	8' - 0"	9' - 0"	SLIDING GLASS DOOR	CAT II SAFETY GLASS	0.28	1.08
36	MASTER BATH	3' - 0"	9' - 0"	FIXED GLASS	CAT II SAFETY GLASS	0.28	1.08
37		6' - 2"	3' - 0"	FIXED GLASS	CAT II SAFETY GLASS	0.28	1.08
38	OFFICE/DEN/BEDROOM	6' - 2"	5' - 3"	HORIZONTAL ROLLER WINDOW	CAT II SAFETY GLASS	0.28	1.08
39		2' - 4"	9' - 0"	FIXED GLASS	CAT II SAFETY GLASS	0.28	1.08
40		3' - 0"	9' - 0"	FIXED GLASS	CAT II SAFETY GLASS	0.28	1.08
41		2' - 4"	9' - 0"	FIXED GLASS	CAT II SAFETY GLASS	0.28	1.08
42		5' - 11"	9' - 0"	FIXED GLASS	CAT II SAFETY GLASS	0.28	1.08
43	LIVING ROOM	14' - 11"	9' - 0"	SLIDING GLASS DOOR	CAT II SAFETY GLASS	0.28	1.08
44	DINING ROOM	8' - 0"	9' - 0"	SLIDING GLASS DOOR	CAT II SAFETY GLASS	0.28	1.08
45		9' - 4"	2' - 0"	FIXED GLASS	CAT II SAFETY GLASS	0.28	1.08
46		3' - 0"	9' - 0"	FIXED GLASS	CAT II SAFETY GLASS	0.28	1.08
47	LIVING ROOM	4' - 2"	9' - 0"	FIXED GLASS	CAT II SAFETY GLASS	0.28	1.08
49	DINING ROOM	12' - 0"	9' - 0"	SLIDING GLASS DOOR	CAT II SAFETY GLASS	0.28	1.08
50	DINING ROOM	8' - 0"	9' - 0"	SLIDING GLASS DOOR	CAT II SAFETY GLASS	0.28	1.08
52		15' - 0"	2' - 0"	FIXED GLASS	CAT II SAFETY GLASS	0.28	1.08
53	LIVING ROOM	2' - 0"	9' - 0"	FIXED GLASS	CAT II SAFETY GLASS	0.28	1.08
54		4' - 6"	9' - 0"	FIXED GLASS	CAT II SAFETY GLASS	0.28	1.08
55		4' - 6"	9' - 0"	FIXED GLASS	CAT II SAFETY GLASS	0.28	1.08
56	DEN	6' - 4"	9' - 0"	FIXED GLASS	CAT II SAFETY GLASS	0.28	1.08
57		10' - 0"	9' - 0"	SLIDING GLASS DOOR	CAT II SAFETY GLASS	0.28	1.08
58		2' - 0"	9' - 0"	FIXED GLASS	CAT II SAFETY GLASS	0.28	1.08
59	MASTER BEDROOM	2' - 0"	9' - 0"	FIXED GLASS	CAT II SAFETY GLASS	0.28	1.08
60		10' - 0"	9' - 0"	SLIDING GLASS DOOR	CAT II SAFETY GLASS	0.28	1.08
61		2' - 6"	9' - 0"	FIXED GLASS	CAT II SAFETY GLASS	0.28	1.08
62		5' - 10"	9' - 0"	FIXED GLASS	CAT II SAFETY GLASS	0.28	1.08
63		7' - 0"	9' - 0"	FIXED GLASS	CAT II SAFETY GLASS	0.28	1.08
64	DINING ROOM	4' - 10"	9' - 0"	FIXED GLASS	CAT II SAFETY GLASS	0.28	1.08
65	LIVING ROOM	2' - 0"	9' - 0"	FIXED GLASS	CAT II SAFETY GLASS	0.28	1.08
66	LIVING ROOM	3' - 6"	9' - 0"	FIXED GLASS	CAT II SAFETY GLASS	0.28	1.08
67	LIVING ROOM	17' - 11"	9' - 0"	SLIDING GLASS DOOR	CAT II SAFETY GLASS	0.28	1.08
68		3' - 9"	9' - 0"	FIXED GLASS	CAT II SAFETY GLASS	0.28	1.08
69		7' - 0"	9' - 0"	SLIDING GLASS DOOR	CAT II SAFETY GLASS	0.28	1.08
70		2' - 6"	8' - 2"	FIXED GLASS	CAT II SAFETY GLASS	0.28	1.08
72		4' - 0"	9' - 0"	FIXED GLASS	CAT II SAFETY GLASS	0.28	1.08
73		11' - 0"	9' - 0"	SLIDING GLASS DOOR	CAT II SAFETY GLASS	0.28	1.08
75		8' - 0"	9' - 0"	SLIDING GLASS DOOR	CAT II SAFETY GLASS	0.28	1.08
76	MASTER BALCONY	14' - 8"	9' - 0"	SLIDING GLASS DOOR	CAT II SAFETY GLASS	0.28	1.08
77		2' - 6"	9' - 0"	FIXED GLASS	CAT II SAFETY GLASS	0.28	1.08
78		2' - 6"	9' - 0"	FIXED GLASS	CAT II SAFETY GLASS	0.28	1.08
79	MASTER BALCONY	2' - 6"	9' - 0"	FIXED GLASS	CAT II SAFETY GLASS	0.28	1.08
80	LIVING ROOM	3' - 6"	9' - 0"	FIXED GLASS	CAT II SAFETY GLASS	0.28	1.08
81		6' - 6"	9' - 0"	SLIDING GLASS DOOR	CAT II SAFETY GLASS	0.28	1.08
82		14' - 10"	2' - 0"	FIXED GLASS	CAT II SAFETY GLASS	0.28	1.08
83	BEDROOM #2	3' - 0"	9' - 0"	FIXED GLASS	CAT II SAFETY GLASS	0.28	1.08
84		2' - 0"	9' - 0"	FIXED GLASS	CAT II SAFETY GLASS	0.28	1.08
85		2' - 0"	9' - 0"	FIXED GLASS	CAT II SAFETY GLASS	0.28	1.08
86		2' - 0"	9' - 0"	FIXED GLASS	CAT II SAFETY GLASS	0.28	1.08
87		15' - 0"	2' - 0"	FIXED GLASS	CAT II SAFETY GLASS	0.28	1.08
88	BEDROOM #1	6' - 2"	3' - 0"	FIXED GLASS	CAT II SAFETY GLASS	0.28	1.08
89	BEDROOM #1	6' - 2"	5' - 3"	HORIZONTAL ROLLER WINDOW	CAT II SAFETY GLASS	0.28	1.08
90	BEDROOM #2	6' - 2"	5' - 3"	HORIZONTAL ROLLER WINDOW	CAT II SAFETY GLASS	0.28	1.08
91	BEDROOM #2	6' - 2"	3' - 0"	FIXED GLASS	CAT II SAFETY GLASS	0.28	1.08
92	BEDROOM #2	2' - 0"	9' - 0"	FIXED GLASS	CAT II SAFETY GLASS	0.28	1.08
93		2' - 0"	9' - 0"	FIXED GLASS	CAT II SAFETY GLASS	0.28	1.08
94	BEDROOM #1	2' - 8"	3' - 0"	FIXED GLASS	CAT II SAFETY GLASS	0.28	1.08
95	BEDROOM #1	2' - 8"	3' - 0"	FIXED GLASS	CAT II SAFETY GLASS	0.28	1.08
96	BEDROOM #1	2' - 8"	5' - 3"	CASEMENT	CAT II SAFETY GLASS	0.28	1.08
97	BEDROOM #1	2' - 8"	5' - 3"	FIXED GLASS	CAT II SAFETY GLASS	0.28	1.08
98	BEDROOM #2	6' - 2"	3' - 0"	FIXED GLASS	CAT II SAFETY GLASS	0.28	1.08
99	BEDROOM #2	6' - 2"	5' - 3"	HORIZONTAL ROLLER WINDOW	CAT II SAFETY GLASS	0.28	1.08
100		2' - 6"	9' - 0"	FIXED GLASS	CAT II SAFETY GLASS	0.28	1.08
101		5' - 10"	9' - 0"	FIXED GLASS	CAT II SAFETY GLASS	0.28	1.08
102		7' - 0"	9' - 0"	FIXED GLASS	CAT II SAFETY GLASS	0.28	1.08
103	DINING ROOM	4' - 10"	9' - 0"	FIXED GLASS	CAT II SAFETY GLASS	0.28	1.08
104	DINING ROOM	2' - 0"	9' - 0"	FIXED GLASS	CAT II SAFETY GLASS	0.28	1.08
105	LIVING ROOM	3' - 6"	9' - 0"	FIXED GLASS	CAT II SAFETY GLASS	0.28	1.08
107		3' - 9"	9' - 0"	FIXED GLASS	CAT II SAFETY GLASS	0.28	1.08
108		7' - 0"	9' - 0"	SLIDING GLASS DOOR	CAT II SAFETY GLASS	0.28	1.08
109		11' - 0"	9' - 0"	SLIDING GLASS DOOR	CAT II SAFETY GLASS	0.28	1.08
110	LIVING ROOM	3' - 6"	9' - 0"	FIXED GLASS	CAT II SAFETY GLASS	0.28	1.08
111		2' - 6"	9' - 0"	FIXED GLASS	CAT II SAFETY GLASS	0.28	1.08
112		5' - 10"	9' - 0"	FIXED GLASS	CAT II SAFETY GLASS	0.28	1.08
113		7' - 0"	9' - 0"	FIXED GLASS	CAT II SAFETY GLASS	0.28	1.08
114	DINING ROOM	4' - 10"	9' - 0"	FIXED GLASS	CAT II SAFETY GLASS	0.28	1.08
115	DINING ROOM	2' - 0"	9' - 0"	FIXED GLASS	CAT II SAFETY GLASS	0.28	1.08
116	LIVING ROOM	3' - 6"	9' - 0"	FIXED GLASS	CAT II SAFETY GLASS	0.28	1.08
117		3' - 9"	9' - 0"	FIXED GLASS	CAT II SAFETY GLASS	0.28	1.08
118		7' - 0"	9' - 0"	SLIDING GLASS DOOR	CAT II SAFETY GLASS	0.28	1.08
119		11' - 0"	9' - 0"	SLIDING GLASS DOOR	CAT II SAFETY GLASS	0.28	1.08
120	LIVING ROOM	3' - 6"	9' - 0"	FIXED GLASS	CAT II SAFETY GLASS	0.28	1.08
121		2' - 6"	9' - 0"	FIXED GLASS	CAT II SAFETY GLASS	0.28	1.08
122		5' - 10"	9' - 0"	FIXED GLASS	CAT II SAFETY GLASS	0.28	1.08
123		7' - 0"	9' - 0"	FIXED GLASS	CAT II SAFETY GLASS	0.28	1.08
124	DINING ROOM	4' - 10"	9' - 0"	FIXED GLASS	CAT II SAFETY GLASS	0.28	1.08
125	DINING ROOM	2' - 0"	9' - 0"	FIXED GLASS	CAT II SAFETY GLASS	0.28	1.08
126	LIVING ROOM	3' - 6"	9' - 0"	FIXED GLASS	CAT II SAFETY GLASS	0.28	1.08
127		3' - 9"	9' - 0"	FIXED GLASS	CAT II SAFETY GLASS	0.28	1.08
128		7' - 0"	9' - 0"	SLIDING GLASS DOOR	CAT II SAFETY GLASS	0.28	1.08
129		11' - 0"	9' - 0"	SLIDING GLASS DOOR	CAT II SAFETY GLASS	0.28	1.08
130	LIVING ROOM	3' - 6"	9' - 0"	FIXED GLASS	CAT II SAFETY GLASS	0.28	1.08
131	LIVING ROOM	17' - 11"	9' - 0"	SLIDING GLASS DOOR	CAT II SAFETY GLASS	0.28	1.08
132	LIVING ROOM	17' - 11"	9' - 0"	SLIDING GLASS DOOR	CAT II SAFETY GLASS	0.28	1.08
133	LIVING ROOM	17' - 10"	9' - 0"	SLIDING GLASS DOOR	CAT II SAFETY GLASS	0.28	1.08

KEYPLAN

CONSULTING ENGINEER

ALIOSKAR GANEM P.E.  
FL. LIC. No. 74745

3001 SW 45TH STREET,  
DANIA BEACH, FL. 33312

NOTES/COMMENTS

REVISIONS / SUBMISSIONS

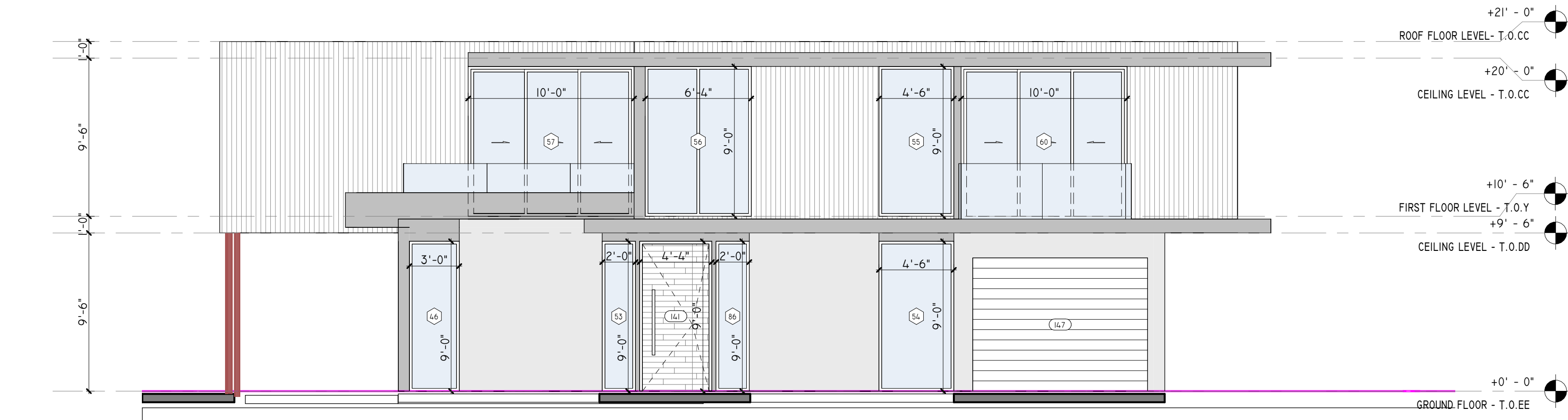
DRAWN BY: AG  
CHECKED BY: AG  
INITIAL DRAWING ISSUE DATE  
RELEASE DATE:

MODEL B

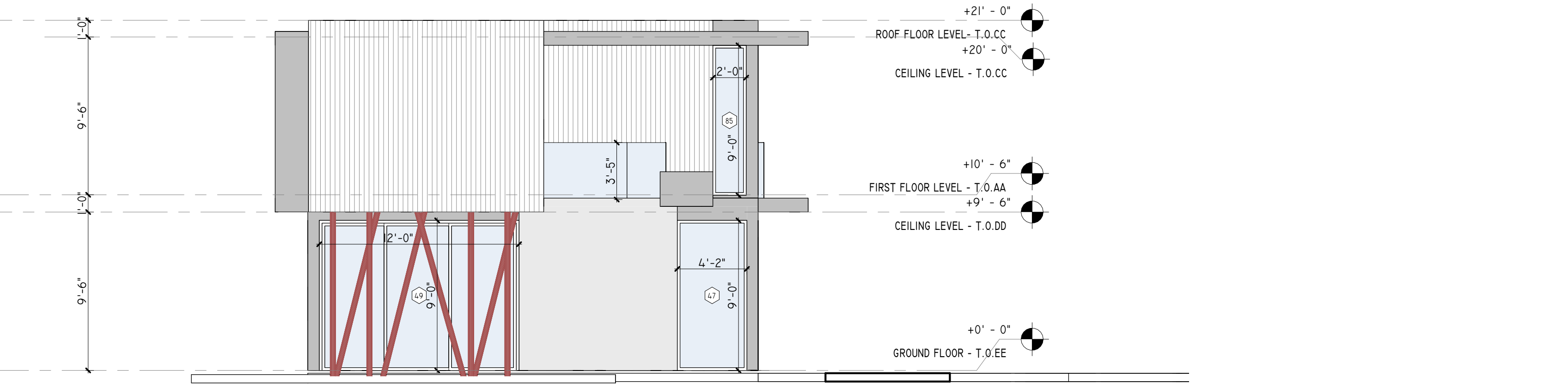
A-1004

STOREFRONT SCHEDULE

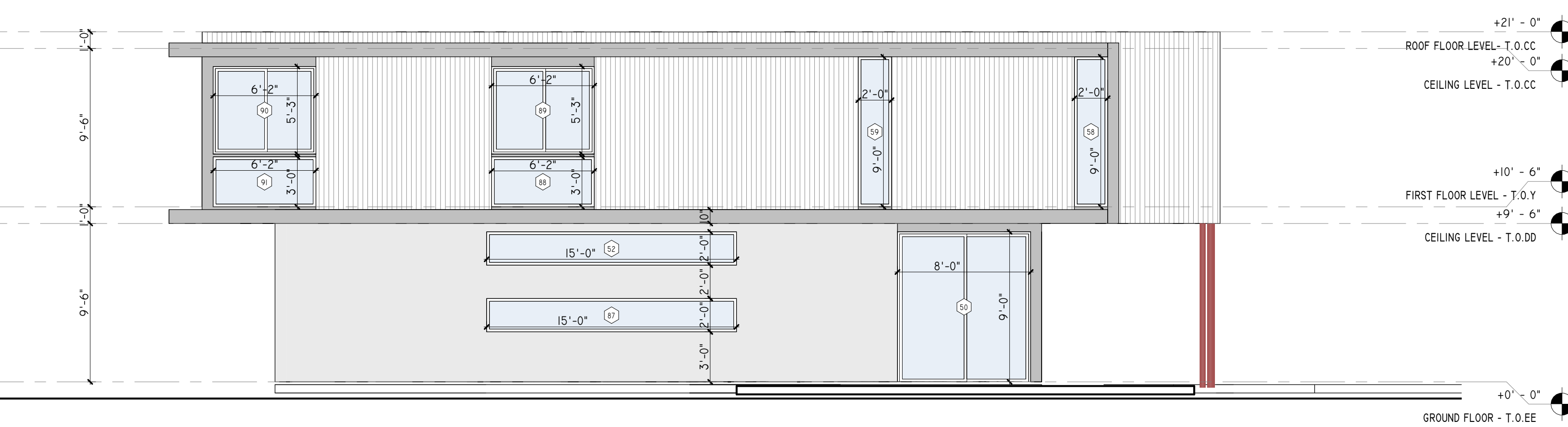
MARK	FROM ROOM NAME	WIDTH	HEIGHT	TYPE COMMENTS	REMARKS	SHGC	U-FACTOR
33		14' - 11"	9' - 0"	SLIDING GLASS DOOR	CAT II SAFETY GLASS	0.28	1.08
34	BEDROOM #1	8' - 0"	9' - 0"	SLIDING GLASS DOOR	CAT II SAFETY GLASS	0.28	1.08
35	BEDROOM #2	8' - 0"	9' - 0"	SLIDING GLASS DOOR	CAT II SAFETY GLASS	0.28	1.08
36	MASTER BATH	3' - 0"	9' - 0"	FIXED GLASS	CAT II SAFETY GLASS	0.28	1.08
37		6' - 2"	3' - 0"	FIXED GLASS	CAT II SAFETY GLASS	0.28	1.08
38	OFFICE/DEN/BEDROOM	6' - 2"	5' - 3"	HORIZONTAL ROLLER WINDOW	CAT II SAFETY GLASS	0.28	1.08
39		2' - 4"	9' - 0"	FIXED GLASS	CAT II SAFETY GLASS	0.28	1.08
40		3' - 0"	9' - 0"	FIXED GLASS	CAT II SAFETY GLASS	0.28	1.08
41		2' - 4"	9' - 6"	FIXED GLASS	CAT II SAFETY GLASS	0.28	1.08
42		5' - 11"	9' - 0"	FIXED GLASS	CAT II SAFETY GLASS	0.28	1.08
43	LIVING ROOM	14' - 11"	9' - 0"	SLIDING GLASS DOOR	CAT II SAFETY GLASS	0.28	1.08
44	DINING ROOM	8' - 0"	9' - 0"	SLIDING GLASS DOOR	CAT II SAFETY GLASS	0.28	1.08
45		9' - 4"	2' - 0"	FIXED GLASS	CAT II SAFETY GLASS	0.28	1.08
46		3' - 0"	9' - 0"	FIXED GLASS	CAT II SAFETY GLASS	0.28	1.08
47	LIVING ROOM	4' - 2"	9' - 0"	FIXED GLASS	CAT II SAFETY GLASS	0.28	1.08
49	DINING ROOM	12' - 0"	9' - 0"	SLIDING GLASS DOOR	CAT II SAFETY GLASS	0.28	1.08
50	DINING ROOM	8' - 0"	9' - 0"	SLIDING GLASS DOOR	CAT II SAFETY GLASS	0.28	1.08
52		15' - 0"	2' - 0"	FIXED GLASS	CAT II SAFETY GLASS	0.28	1.08
53	LIVING ROOM	2' - 0"	9' - 0"	FIXED GLASS	CAT II SAFETY GLASS	0.28	1.08
54		4' - 6"	9' - 0"	FIXED GLASS	CAT II SAFETY GLASS	0.28	1.08
55		4' - 6"	9' - 0"	FIXED GLASS	CAT II SAFETY GLASS	0.28	1.08
56	DEN	6' - 4"	9' - 0"	FIXED GLASS	CAT II SAFETY GLASS	0.28	1.08
57		10' - 0"	9' - 0"	SLIDING GLASS DOOR	CAT II SAFETY GLASS	0.28	1.08
58		2' - 0"	9' - 0"	FIXED GLASS	CAT II SAFETY GLASS	0.28	1.08
59	MASTER BEDROOM	2' - 0"	9' - 0"	FIXED GLASS	CAT II SAFETY GLASS	0.28	1.08
60		10' - 0"	9' - 0"	SLIDING GLASS DOOR	CAT II SAFETY GLASS	0.28	1.08
61		2' - 6"	9' - 0"	FIXED GLASS	CAT II SAFETY GLASS	0.28	1.08
62		5' - 10"	9' - 0"	FIXED GLASS	CAT II SAFETY GLASS	0.28	1.08
63		7' - 0"	9' - 0"	FIXED GLASS	CAT II SAFETY GLASS	0.28	1.08
64	DINING ROOM	4' - 10"	9' - 0"	FIXED GLASS	CAT II SAFETY GLASS	0.28	1.08
65	LIVING ROOM	2' - 0"	9' - 0"	FIXED GLASS	CAT II SAFETY GLASS	0.28	1.08
66	LIVING ROOM	3' - 6"	9' - 0"	FIXED GLASS	CAT II SAFETY GLASS	0.28	1.08
67	LIVING ROOM	17' - 11"	9' - 0"	SLIDING GLASS DOOR	CAT II SAFETY GLASS	0.28	1.08
68		3' - 9"	9' - 0"	FIXED GLASS	CAT II SAFETY GLASS	0.28	1.08
69		7' - 0"	9' - 0"	SLIDING GLASS DOOR	CAT II SAFETY GLASS	0.28	1.08
70		2' - 6"	8' - 2"	FIXED GLASS	CAT II SAFETY GLASS	0.28	1.08
72		4' - 0"	9' - 0"	FIXED GLASS	CAT II SAFETY GLASS	0.28	1.08
73		11' - 0"	9' - 0"	SLIDING GLASS DOOR	CAT II SAFETY GLASS	0.28	1.08
75		8' - 0"	9' - 0"	SLIDING GLASS DOOR	CAT II SAFETY GLASS	0.28	1.08
76	MASTER BALCONY	14' - 8"	9' - 0"	SLIDING GLASS DOOR	CAT II SAFETY GLASS	0.28	1.08
77		2' - 6"	9' - 0"	FIXED GLASS	CAT II SAFETY GLASS	0.28	1.08
78		2' - 6"	9' - 0"	FIXED GLASS	CAT II SAFETY GLASS	0.28	1.08
79	MASTER BALCONY	2' - 6"	9' - 0"	FIXED GLASS	CAT II SAFETY GLASS	0.28	1.08
80	LIVING ROOM	3' - 6"	9' - 0"	FIXED GLASS	CAT II SAFETY GLASS	0.28	1.08
81		6' - 6"	9' - 0"	SLIDING GLASS DOOR	CAT II SAFETY GLASS	0.28	1.08
82		14' - 10"	2' - 0"	FIXED GLASS	CAT II SAFETY GLASS	0.28	1.08
83	BEDROOM #2	3' - 0"	9' - 0"	FIXED GLASS	CAT II SAFETY GLASS	0.28	1.08
84		2' - 0"	9' - 0"	FIXED GLASS	CAT II SAFETY GLASS	0.28	1.08
85		2' - 0"	9' - 0"	FIXED GLASS	CAT II SAFETY GLASS	0.28	1.08
86		2' - 0"	9' - 0"	FIXED GLASS	CAT II SAFETY GLASS	0.28	1.08
87		15' - 0"	2' - 0"	FIXED GLASS	CAT II SAFETY GLASS	0.28	1.08
88	BEDROOM #1	6' - 2"	3' - 0"	FIXED GLASS	CAT II SAFETY GLASS	0.28	1.08
89	BEDROOM #1	6' - 2"	5' - 3"	HORIZONTAL ROLLER WINDOW	CAT II SAFETY GLASS	0.28	1.08
90	BEDROOM #2	6' - 2"	5' - 3"	HORIZONTAL ROLLER WINDOW	CAT II SAFETY GLASS	0.28	1.08
91	BEDROOM #2	6' - 2"	3' - 0"	FIXED GLASS	CAT II SAFETY GLASS	0.28	1.08
92	BEDROOM #2	2' - 0"	9' - 0"	FIXED GLASS	CAT II SAFETY GLASS	0.28	1.08
93	BEDROOM #2	2' - 0"	9' - 0"	FIXED GLASS	CAT II SAFETY GLASS	0.28	1.08
94	BEDROOM #1	2' - 8"	3' - 0"	FIXED GLASS	CAT II SAFETY GLASS	0.28	1.08
95	BEDROOM #1	2' - 8"	3' - 0"	FIXED GLASS	CAT II SAFETY GLASS	0.28	1.08
96	BEDROOM #1	2' - 8"	5' - 3"	CASEMENT	CAT II SAFETY GLASS	0.28	1.08
97	BEDROOM #1	2' - 8"	5' - 3"	FIXED GLASS	CAT II SAFETY GLASS	0.28	1.08
98	BEDROOM #2	6' - 2"	3' - 0"	FIXED GLASS	CAT II SAFETY GLASS	0.28	1.08
99	BEDROOM #2	6' - 2"	5' - 3"	HORIZONTAL ROLLER WINDOW	CAT II SAFETY GLASS	0.28	1.08
100		2' - 6"	9' - 0"	FIXED GLASS	CAT II SAFETY GLASS	0.28	1.08
101		5' - 10"	9' - 0"	FIXED GLASS	CAT II SAFETY GLASS	0.28	1.08
102		7' - 0"	9' - 0"	FIXED GLASS	CAT II SAFETY GLASS	0.28	1.08
103	DINING ROOM	4' - 10"	9' - 0"	FIXED GLASS	CAT II SAFETY GLASS	0.28	1.08
104	DINING ROOM	2' - 0"	9' - 0"	FIXED GLASS	CAT II SAFETY GLASS	0.28	1.08
105	LIVING ROOM	3' - 6"	9' - 0"	FIXED GLASS	CAT II SAFETY GLASS	0.28	1.08
107		3' - 9"	9' - 0"	FIXED GLASS	CAT II SAFETY GLASS	0.28	1.08
108		7' - 0"	9' - 0"	SLIDING GLASS DOOR	CAT II SAFETY GLASS	0.28	1.08
109		11' - 0"	9' - 0"	SLIDING GLASS DOOR	CAT II SAFETY GLASS	0.28	1.08
110	LIVING ROOM	3' - 6"	9' - 0"	FIXED GLASS	CAT II SAFETY GLASS	0.28	1.08
111		2' - 6"	9' - 0"	FIXED GLASS	CAT II SAFETY GLASS	0.28	1.08
112		5' - 10"	9' - 0"	FIXED GLASS	CAT II SAFETY GLASS	0.28	1.08
113		7' - 0"	9' - 0"	FIXED GLASS	CAT II SAFETY GLASS	0.28	1.08
114	DINING ROOM	4' - 10"	9' - 0"	FIXED GLASS	CAT II SAFETY GLASS	0.28	1.08
115	DINING ROOM	2' - 0"	9' - 0"	FIXED GLASS	CAT II SAFETY GLASS	0.28	1.08
116	LIVING ROOM	3' - 6"	9' - 0"	FIXED GLASS	CAT II SAFETY GLASS	0.28	1.08
117		3' - 9"	9' - 0"	FIXED GLASS	CAT II SAFETY GLASS	0.28	1.08
118		7' - 0"	9' - 0"	SLIDING GLASS DOOR	CAT II SAFETY GLASS	0.28	1.08
119		11' - 0"	9' - 0"	SLIDING GLASS DOOR	CAT II SAFETY GLASS	0.28	1.08
120	LIVING ROOM	3' - 6"	9' - 0"	FIXED GLASS	CAT II SAFETY GLASS	0.28	1.08
121		2' - 6"	9' - 0"	FIXED GLASS	CAT II SAFETY GLASS	0.28	1.08
122		5' - 10"	9' - 0"	FIXED GLASS	CAT II SAFETY GLASS	0.28	1.08
123		7' - 0"	9' - 0"	FIXED GLASS	CAT II SAFETY GLASS	0.28	1.08
124	DINING ROOM	4' - 10"	9' - 0"	FIXED GLASS	CAT II SAFETY GLASS	0.28	1.08
125	DINING ROOM	2' - 0"	9' - 0"	FIXED GLASS	CAT II SAFETY GLASS	0.28	1.08
126	LIVING ROOM	3' - 6"	9' - 0"	FIXED GLASS	CAT II SAFETY GLASS	0.28	1.08
127		3' - 9"	9' - 0"	FIXED GLASS	CAT II SAFETY GLASS	0.28	1.08
128		7' - 0"	9' - 0"	SLIDING GLASS DOOR	CAT II SAFETY GLASS	0.28	1.08
129		11' - 0"	9' - 0"	SLIDING GLASS DOOR	CAT II SAFETY GLASS	0.28	1.08
130	LIVING ROOM	3' - 6"	9' - 0"	FIXED GLASS	CAT II SAFETY GLASS	0.28	1.08
131	LIVING ROOM	17' - 11"	9' - 0"	SLIDING GLASS DOOR	CAT II SAFETY GLASS	0.28	1.08
132	LIVING ROOM	17' - 11"	9' - 0"	SLIDING GLASS DOOR	CAT II SAFETY GLASS	0.28	1.08
133	LIVING ROOM	17' - 10"	9' - 0"	SLIDING GLASS DOOR	CAT II SAFETY GLASS	0.28	1.08



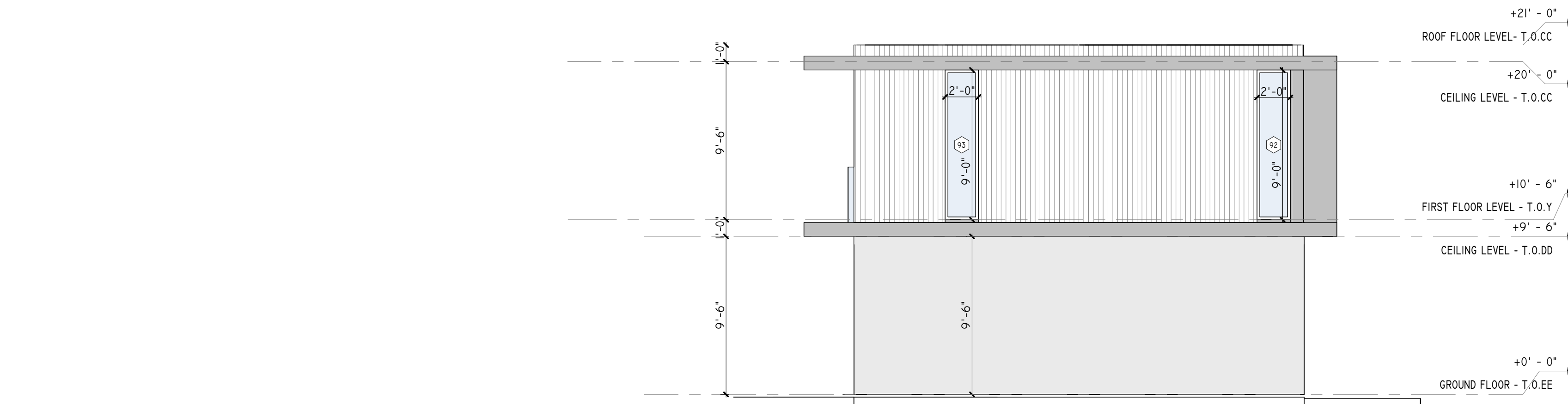
A WEST ELEVATION  
3/16" = 10'



B SOUTH ELEVATION  
3/16" = 10'



C EAST ELEVATION  
3/16" = 10'



D NORTH ELEVATION  
3/16" = 10'